

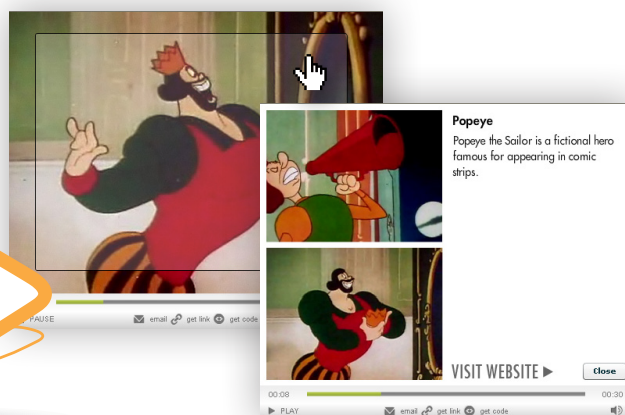
# BRIGHTCOVE INTEGRATION GUIDE

## USING THE LINKTO BRIGHTCOVE PLUGIN

The LinkTo Brightcove plugin allows you to integrate your interactive video into your Brightcove Player. In order to do that you will have to insert the BEML code generated by LinkTo into your template file on Brightcove. Once added, users of your Brightcove Player will be presented with the interactive interface that you've created.



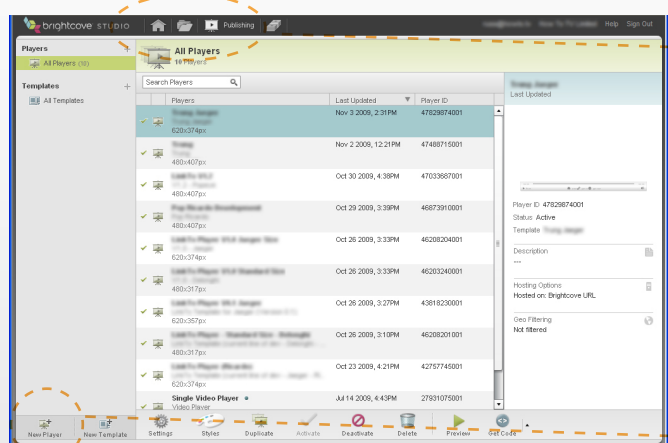
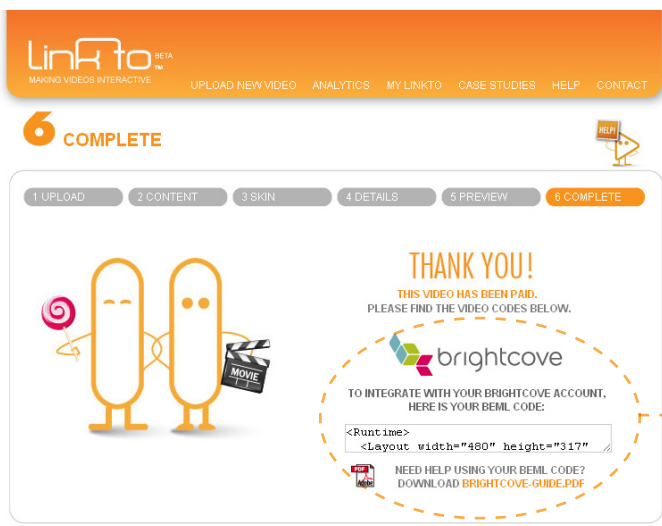
### FINAL RESULT



## 10 STEPS TO INTEGRATE THE LINKTO TECHNOLOGY INTO YOUR BRIGHTCOVE PLAYER

### STEP 1. GETTING THE BEML CODE

On the LinkTo website, after completing the creation of your interactive video, you will be presented with the BEML code that you will need to copy - please refer to the picture below.

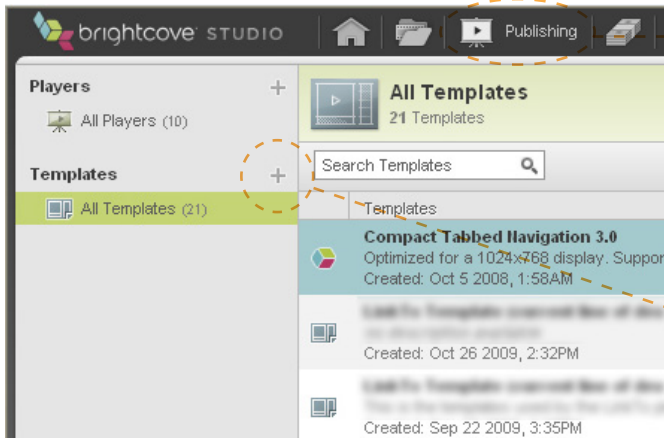


### STEP 2. UPLOAD VIDEO

Access the Media module. Click on the "Upload Videos" button to add your video to the list.

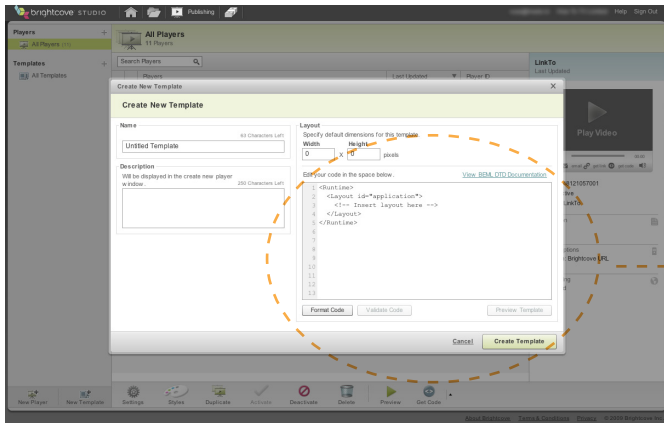
NOTE: You must upload the same video file that you've previously used in LinkTo.





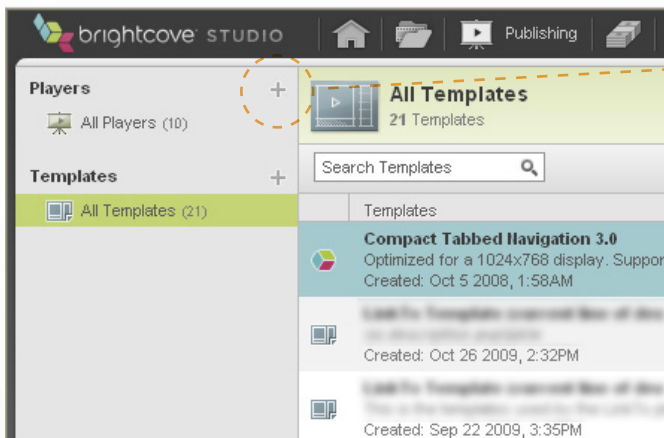
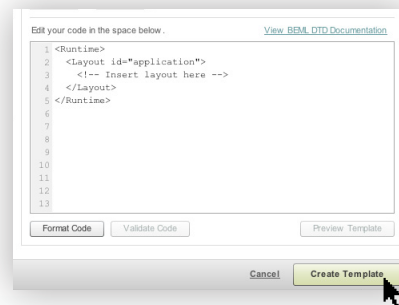
### STEP 3. CREATE NEW TEMPLATE

Access the Publishing module. In the left column click on the "+" next to "Templates".



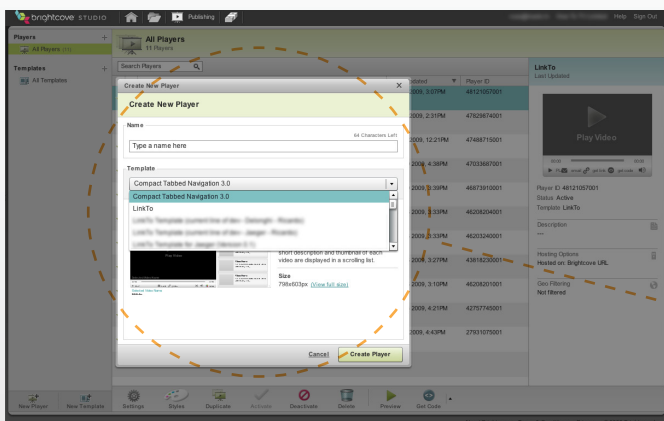
### STEP 4. PASTE BEML CODE

Paste the BEML code that you copied from the LinkTo Website.



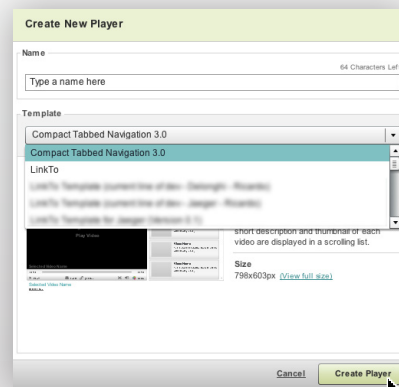
### STEP 5. CREATE NEW PLAYER

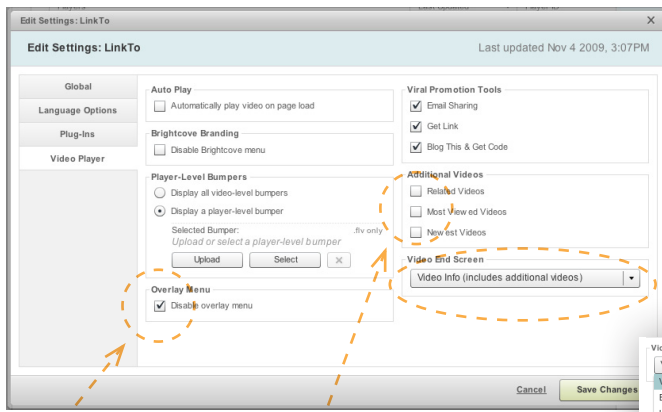
Click on the "+" symbol on the left column next to "Players".



### STEP 6. NEW PLAYER DETAILS

Type in a name for the player and select the template that you've just created on step 4.





### STEP 7a

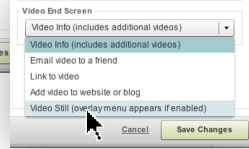
Check "Disable overlay menu".

### STEP 7b

Uncheck all "Additional Videos" options.

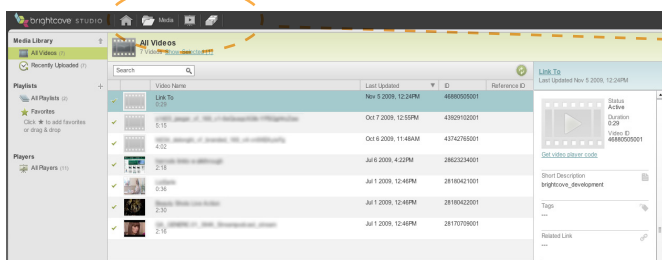
## STEP 7. EDIT SETTINGS

Double click on the player that you've just created in the main column. The "Edit Settings" window will pop up. Select "Video Player" in the left column. Follow steps 7a - 7c then save your changes.



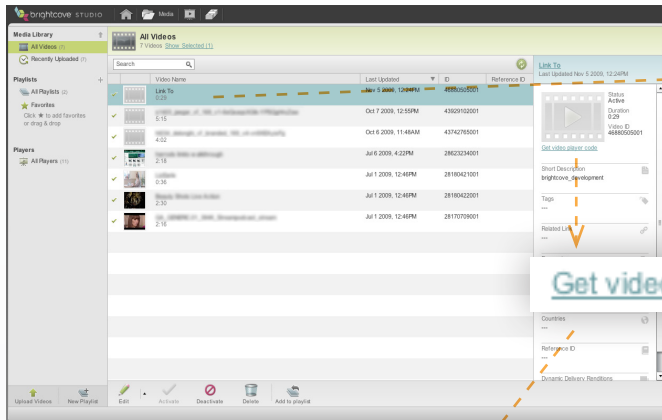
### STEP 7c

Under "Video End Screen" select the "Video Still" option.



## STEP 8. ACCESS THE MEDIA MODULE

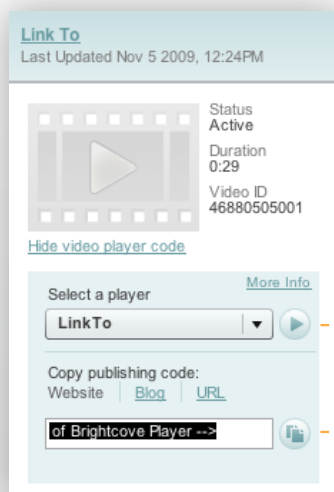
In your Brightcove Studio, access the "Media" module.



## STEP 9. GET YOUR EMBED CODE

Highlight your video in the main column.

On the right column, click on "Get video player code".



## STEP 10. COMPLETE!

You now have two options:

Click to preview the player.

Click to copy final embed code.

## PREVIEW

